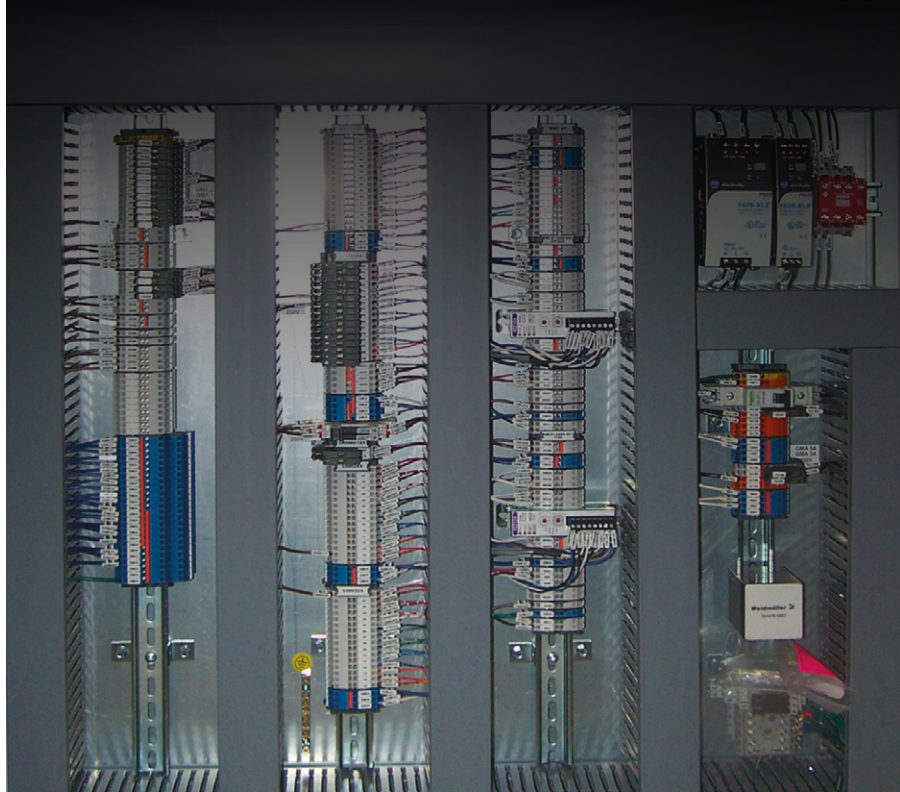




Easy Remote Inspections and Troubleshooting for your CETEC™ Twin or Quad Bandsaw



This retrofit will allow you to ensure optimal performance of your CETEC™ Twin or Quad Bandsaw at all times.

The replacement of the obsolete controller card (black box) by a new state-of-the-art Rockwell PLC will enable BID technicians to connect remotely when needed. With this new PLC, CETEC™ inspections and troubleshooting can be performed quickly and easily from anywhere.

Benefits

- Facilitates inspections and troubleshooting
- Reduces CETEC™ downtime
- Displays real time trends to monitor the status of each bandsaw
- BID technicians are trained specifically on this CETEC™ PLC

Technical Highlights



Standard Allen-Bradley components that are readily available



Dedicated PLC for remote support



RMC150 Motion Controller by Delta offers better overall hydraulic control



Simple remote access procedure similar to other PLC systems



HMI available like on other PLC systems



This retrofit is compatible with all CETEC™ models

For more information contact your BID Group sales representative



bidgroup.ca | 418 228 8911

